

■ MA+ Series Specifications

SPECIFICATIONS		MA15+	MA12+
Frequency Response(-10dB)		45Hz-20kHz	50Hz-20kHz
Directivity -6dB(H°×V°)		90° × 60°	
Maximum Calculated SPL/1M	Continuous	128dB	125dB
	Program	131dB	128dB
	Peak	134dB	131dB
Drivers	HF	Customized driver,1.75" voice coil,1.0" exit	
	LF	Customized 15" driver, 3.0" voice coil	Customized 12" driver, 2.5" voice coil
DSP			
Processor		48kHz signal sampling frequency	
Presets		MUSIC, FLAT, SPEECH, W/SUB	
AMPLIFIER			
Amplifier		Class D	
Power(RMS standards)		800W	
Peak Power		1600W	
Frequency Response (1W 8Ω 2ch)		20Hz-20kHz(±0.5dB)	
Intermodulation Distortion (20Hz-20kHz, half power)		<0.05%	
Total Harmonic Distortion (20Hz-20kHz, Rated power 8Ω)		<0.05%	
Cooling		Cooling with fans ,air convection	
Protection		DC protection,Short circuit protection,Overheat protection, Output overload protection, Soft startup protection, Overvoltage protection, Undervoltage protection	
Signal Input Connector		Female XLR(Mono jack 6.35), 3.5mm Jack Input, Wireless bluetooth	
Signal Output Connector		Male XLR mixed output or balanced output	
Power Input		IEC power connector	
Working Voltage		100-240V~ (±10%,50/60Hz)	
Power consumption (1/8 output power)		64W	55W
CABINET			
Cabinet		New polypropylene composite material	
Cabinet Color		Black is the default color	
Grille		Iron mesh	
Handles		1 side,1 top	
Monitor Angle		Symmetrical 45° monitor angle	
Hanging Hardwares		M8 screw	
Pole Mount		Base hole Φ35mm	
Speaker Dimension (W×H×D)		432×661×387mm	381×582×343mm
Carton Dimensions (W×H×D)		476×743×445mm	426×665×401mm
Net Weight		19.0kg	16.0kg
Shipping Weight		23.0kg	19.0kg

■ All content subject to change without notice. All rights reserved. AC - MA+ - 202506



Dynamic Audio Solutions

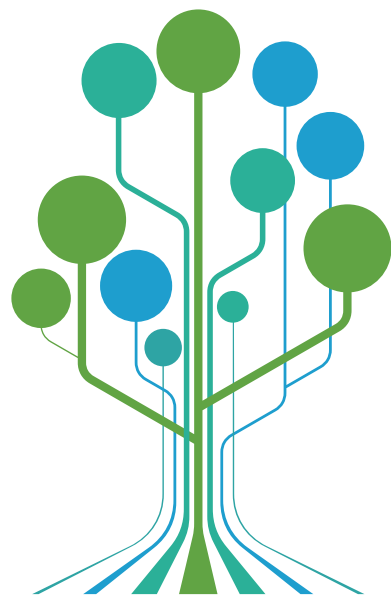
BrainCore™
Technology Inside



MA+ Series
Portable Active DSP-controlled Loudspeaker

The MA+ Series is the latest upgraded version from Audiocenter, building upon the renowned MA Series. It retains the lightweight design, premium acoustic performance, and excellent sound quality of its predecessor while introducing breakthrough innovations in functionality and design. A new 2-inch TFT display enables users to access a variety of audio effect programs with a single click, offering enhanced personalization, interactivity, and flexibility.

The speaker cabinets are crafted from a newly developed injection-molded polypropylene composite material. This material is designed to be durable, wear-resistant, and to effectively reduce vibrations during high-dynamic-range playback, ensuring clear and detailed sound quality. After rigorous acoustic testing and optimization, the speakers produce clear, delicate, and smooth sound, making them suitable for a wide range of music genres and application scenarios.



BrainCore™

BrainCore™ is an innovative core application technology researched and developed by Audiocenter, devoted to Audiocenter active DSP-controlled loudspeakers with supreme performance and high reliability.

With its advanced technology and scientific methodology, BrainCore™ analyses and processes the input signal, DSP module, Class D amplifier and loudspeaker optimally, achieving excellent frequency response and audio reproduction even at high levels of SPL.

IMPORTANT FEATURES



Innovative BrainCore™ technology to improve the audio performance of the system

The innovative BrainCore™ technology and built-in powerful DSP processor improve the performance of the speaker. With Cort™ correction technology and Limita™ processing technology, the system works with safety and reliability and achieves supreme performance.



Visual DSP Settings

By rotating the encoder on the back panel, users can easily access the DSP settings interface on the display screen to adjust various audio parameters.



Advanced Cooling System

Moulded large heatsink improves cooling, resulting in higher reliability.



Built-in Bluetooth 5.0 Chip

Built-in wireless Bluetooth enables easy connection of various Bluetooth devices for audio output. Supports Bluetooth connection with TWS (True Wireless Stereo) functionality, allowing users to achieve stereo wireless pairing. Users can enjoy the wonderful sound whenever and wherever possible. The transfer is stable and reliable.



Durable and reliable

one-piece molding with a new type of polypropylene composite material, strong and wear-resistant.



Plug-and-play, user-friendly controls

Simple and integrated control panel, easy to set up and play.

Flexible and friendly, users can choose music styles based on their preference.

Supports signal inputs from microphone, musical instrument and Bluetooth devices, etc. and control each signal independently.



Class D Amplifier

MA+ adopts customized Class D amplifier together with switch mode power supply technology, which ensures the high efficiency of the system, exquisite and compact outlook and advanced cooling.



Big horn

The big horn delivers clear and perfect stereo sound with high fidelity.



Portable Design

Easy to carry and transport.



Elegant physical design

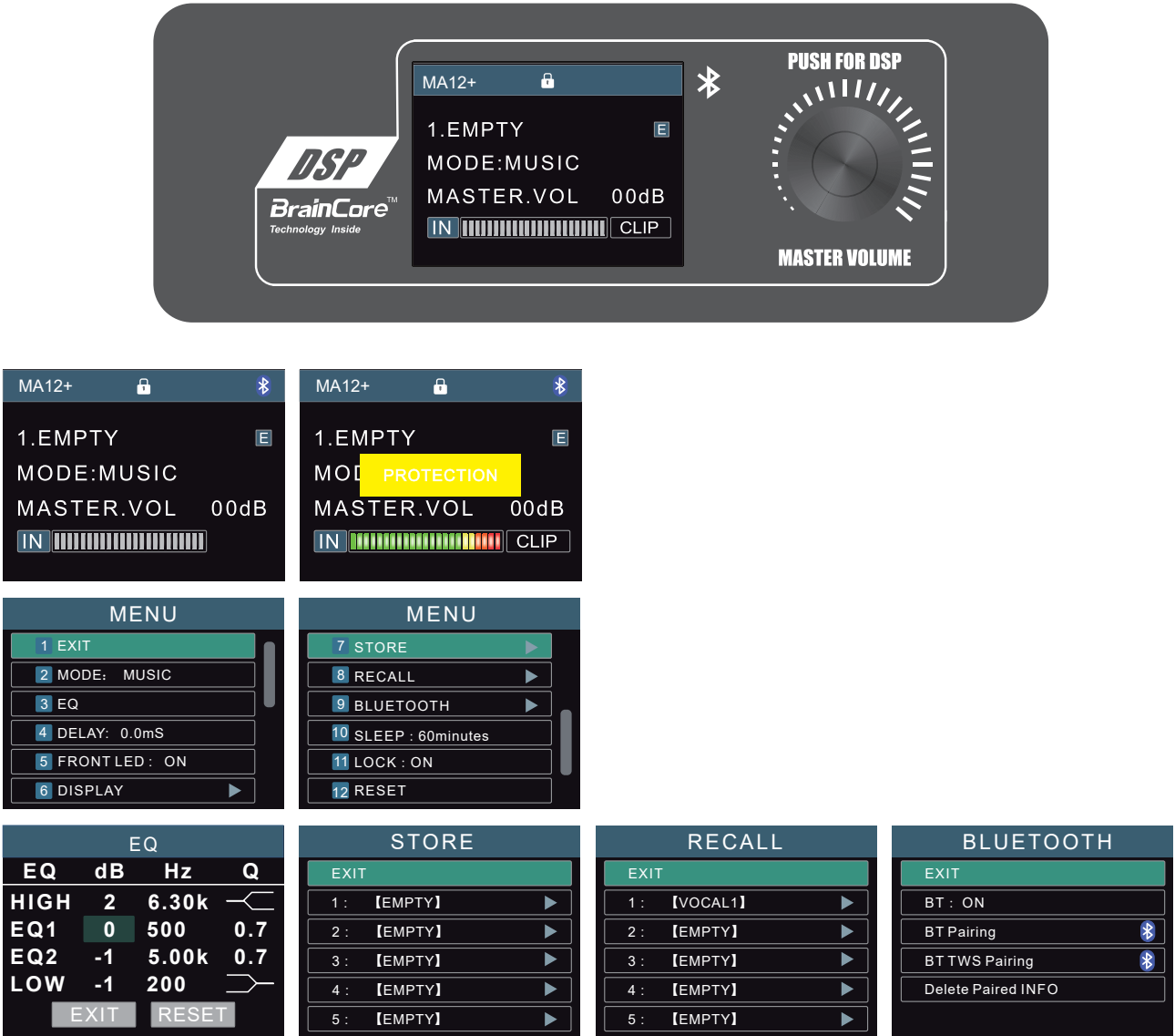
The cabinet is shaped with a charming curvature, elegant and stylish.

Function Introduction of Rear Panel



- | | |
|----------------------------------|-------------------------------------|
| 1 2-inch TFT Display | 7 OUTPUT LINE B/MIX Switch |
| 2 DSP/MASTER Volume Control Knob | 8 INPUT Combo (LINE A/ MIC) |
| 3 CH A Gain Control Knob | 9 INPUT Combo (LINE B) |
| 4 CH B Gain Control Knob | 10 OUTPUT Male XLR (LINE B/MIX OUT) |
| 5 INPUT Jack (AUX) | 11 POWER Switch |
| 6 INPUT LINE A/MIC Switch | 12 IEC Power Connector |

Function Introduction of TFT Display



HD Display

The speaker is equipped with a 240 (H) x 320 (V) pixel TFT display, providing clear image display.

Easy Operation

By rotating the encoder on the back panel, users can easily access the DSP settings interface.

Bluetooth 5.0 with TWS Pairing

Supports Bluetooth connection with TWS (True Wireless Stereo) functionality, allowing users to achieve stereo wireless pairing.

Presets Available

The DSP has built-in multiple presets, catering to diverse applications.

Personalized Audio Adjustment

Users can easily adjust the EQ, delay, and gain to tailor the sound to their personal preferences. Once adjusted, settings can be saved for convenient recall the next time they're needed.

Signal LED Control

Users can set the front signal LED to turn on or off via the display screen interface.

Sleep Mode

Users can easily set the product's sleep mode through a simple operating interface.

MA15⁺



PRODUCT PROFILE

The MA15⁺ is crafted from a newly developed polypropylene composite material, custom-molded to deliver a stylish appearance, superior performance, and lightweight usability. Integrated with BrainCore™ technology, the MA12⁺ achieves high integration of the input signal, power amplifier, and DSP module. This optimizes audio energy for maximum efficiency, ensuring the product is both stable and reliable.

Equipped with Bluetooth and TWS (True Wireless Stereo) technology, the MA15⁺ enables convenient stereo wireless pairing, allowing users to enjoy stable, high - quality sound anytime, anywhere.

The MA15⁺ can be mounted on a tripod or suspended for use as a main PA speaker and is also suitable for stage monitoring.

SPECIFICATION

Frequency Response(-10dB)	45Hz-20kHz
Horizontal Coverage	90°
Vertical Coverage	60°
Maximum Calculated SPL/1M(Continuous/Peak)	128dB/134dB
HF Driver	Customized driver, 1.75" voice coil, 1.0" exit
LF Driver	Customized 15" driver, 3.0" voice coil
DSP	
Processor	48kHz signal sampling frequency
Presets	MUSIC, FLAT, SPEECH, W/SUB
AMPLIFIER	
Amplifier Circuitry	Class D
Power (RMS standards)	800W
Peak Power	1600W
Frequency Response (1W 8Ω 2ch)	20Hz-20kHz(±0.5dB)
Intermodulation Distortion	<0.05%
Total Harmonic Distortion	<0.05%
Cooling System	Cooling with fans,air convection
Protection	DC protection, short circuit protection, overheat protection, input overload protection, output overload protection, soft startup protection, overvoltage protection, undervoltage protection
Signal Input	Female XLR(Mono jack 6.35), 3.5mm Jack Input, Wireless bluetooth
Signal Output	Male XLR mixed output or balanced output
Power Input	IEC power connector
AC Power Operating Range	100-240V~ (±10%,50/60Hz)
Power consumption (1/8 output power)	64W
CABINET	
Cabinet	New polypropylene composite material
Cabinet Color	Black is the default color
Grille	Iron mesh
Handles	1 side,1 top
Monitor Angle	Symmetrical 45° monitor angle
Hanging Hardwares	M8 screw
Pole Mount	Base hole Φ35mm
Speaker Dimension (W×H×D)	432x661x387mm
Carton Dimensions (W×H×D)	476x743x445mm
Net Weight	19.0kg
Shipping Weight	23.0kg

SUGGESTED APPLICATION



Meeting rooms



Houses of worship



Museums



Lecture Halls



DJ



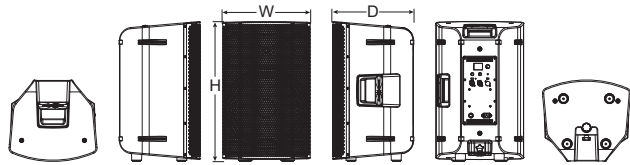
Stage Monitor



Weddings

MA12+

1600W
Peak Power

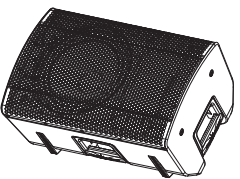
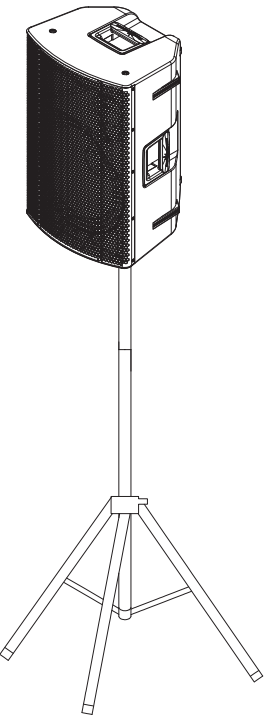
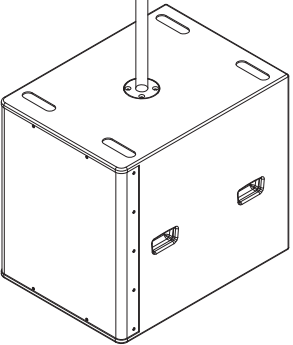
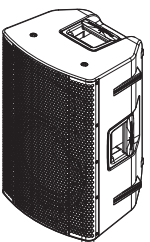
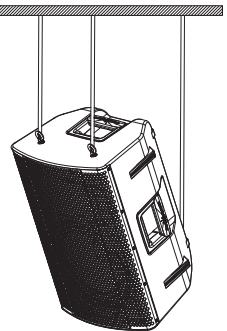
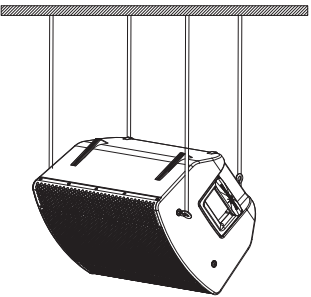


Dimension(W×H×D):381×582×343mm

SPECIFICATION

Frequency Response(-10dB)	50Hz-20kHz
Horizontal Coverage	90°
Vertical Coverage	60°
Maximum Calculated SPL/1M(Continuous/Peak)	125dB/131dB
HF Driver	Customized driver,1.75" voice coil, 1.0" exit
LF Driver	Customized 12" driver, 2.5" voice coil
DSP	
Processor	48kHz signal sampling frequency
Preset	MUSIC, FLAT, SPEECH, W/SUB
AMPLIFIER	
Amplifier Circuitry	Class D
Power (RMS standards)	800W
Peak Power	1600W
Frequency Response (1W 8Ω 2ch)	20Hz-20kHz(±0.5dB)
Intermodulation Distortion	<0.05%
Total Harmonic Distortion	<0.05%
Cooling System	Cooling with fans,air convection
Protection	DC protection, short circuit protection, overheat protection, input overload protection, output overload protection, soft startup protection, overvoltage protection, undervoltage protection
Signal Input	Female XLR(Mono jack 6.35), 3.5mm Jack Input, Wireless bluetooth
Signal Output	Male XLR mixed output or balanced output
Power Input	IEC power connector
AC Power Operating Range	100-240V~ (±10%,50/60Hz)
Power consumption (1/8 output power)	55W
CABINET	
Cabinet	New polypropylene composite material
Cabinet Color	Black is the default color
Grille	Iron mesh
Handles	1 side,1 top
Monitor Angle	Symmetrical 45° monitor angle
Hanging Hardwares	M8 screw
Pole Mount	Base hole Φ35mm
Speaker Dimension (W×H×D)	381x582x343mm
Carton Dimensions (W×H×D)	426x665x401mm
Net Weight	16.0kg
Shipping Weight	19.0kg

INSTALLATIONS



PRODUCT PROFILE

The MA12+ is crafted from a newly developed polypropylene composite material, custom-molded to deliver a stylish appearance, superior performance, and lightweight usability. Integrated with BrainCore™ technology, the MA12+ achieves high integration of the input signal, power amplifier, and DSP module. This optimizes audio energy for maximum efficiency, ensuring the product is both stable and reliable.

Equipped with Bluetooth and TWS (True Wireless Stereo) technology, the MA12+ enables convenient stereo wireless pairing, allowing users to enjoy stable, high - quality sound anytime, anywhere.

The MA12+ can be mounted on a tripod or suspended for use as a main PA speaker and is also suitable for stage monitoring.

SUGGESTED APPLICATION



Meeting rooms



Houses of worship



Museums



Lecture Halls



DJ



Stage Monitor



Weddings